

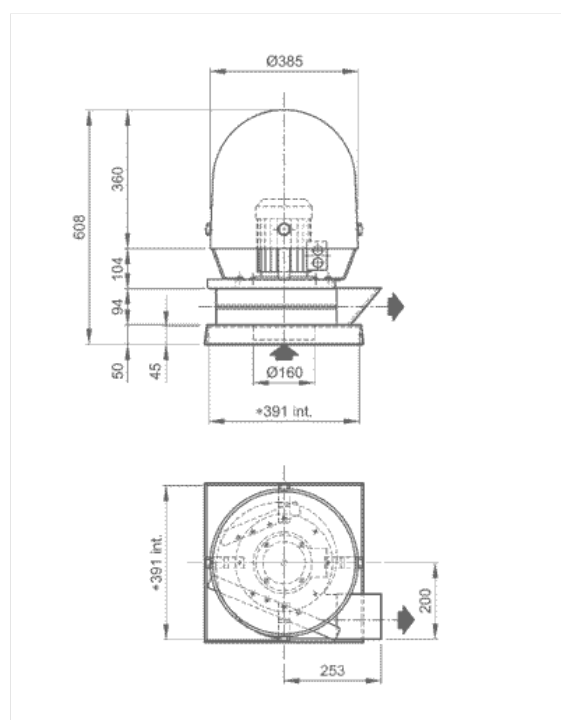
## VSAT 20



### Roof Extract Fan High Pressure

Produced completely by injection moulding. Polypropylene housing and plinth resistant to UV rays. High-performance polypropylene impeller with forward curved blades, statically and dynamically balanced, incorporating a reinforced hub. Gaskets from corrosive material providing protection against shaft/case leakage. Polypropylene motor cover resistant to environmental factors. Stainless steel external assembly fittings. Available with three-phase and single phase single speed motors, two-speed motors with IP55 protection or Ex-d protection.

VSAT 20								
Q m <sup>3</sup> /h	Ht mmH <sub>2</sub> O	Hs mmH <sub>2</sub> O	kW	HP	g/min rpm	dB (A)	kg	kg Ex-d
250	27	23	0,18	0,25	1450	60	9	16
350		19						
400		15						
450	105	92	0,55	0,75	2900	67	11	21
550	108	89						
720	109	76						
800	105	63						



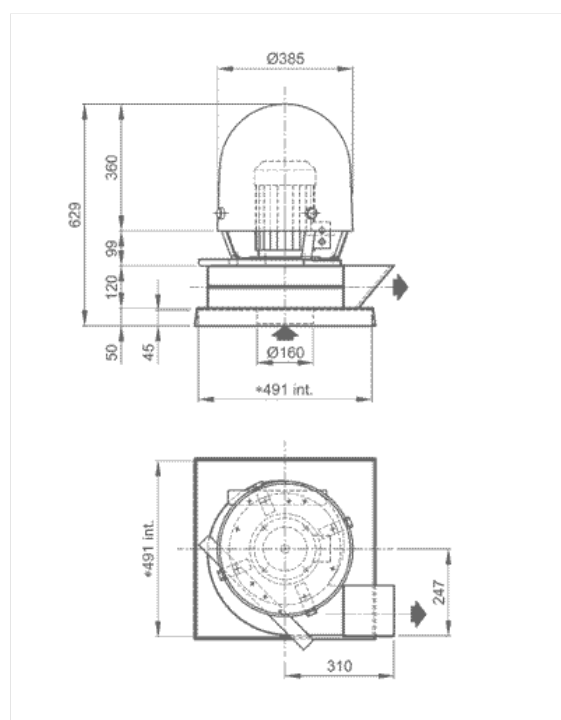
## VSAT 25



### Roof Extract Fan High Pressure

Produced completely by injection moulding. Polypropylene housing and plinth resistant to UV rays with dual positions. High-performance polypropylene impeller with forward curved blades, statically and dynamically balanced, incorporating a reinforced hub. Gaskets from corrosive material providing protection against shaft/case leakage. Stainless steel external assembly fittings. Available with three-phase and single phase single speed motors, two-speed motors with IP55 protection or Ex-d protection.

VSAT 25								
Q m³/h	Ht mmH₂O	Hs mmH₂O	kW	HP	g/min rpm	dB (A)	kg	kg Ex-d
400	40	37	0,25	0,35	1450	63	10	19
720	42	32						
800	41	29						
720	160	150	1,5	2	2900	72	17	32
900	170	154						
1100	178							
1500	170							



## VSAT 30



### Roof Extract Fan High Pressure

Produced completely by injection moulding. Polypropylene housing and plinth resistant to UV rays. High-performance polypropylene impeller with forward curved blades, statically and dynamically balanced, incorporating a reinforced hub. Gaskets from corrosive material providing protection against shaft/case leakage. Polypropylene motor cover resistant to environmental factors. Stainless steel external assembly fittings. Available with three-phase and single phase single speed motors, two-speed motors with IP55 protection or Ex-d protection.

VSAT 30								
Q m <sup>3</sup> /h	Ht mmH <sub>2</sub> O	Hs mmH <sub>2</sub> O	kW	HP	g/min rpm	dB (A)	kg	kg Ex-d
720	59	53	0,55	0,75	1450	69	20	31
900	63	54						
1450	56	34						
1450	232	210	3	4	2900	80	34	51
1600	240	214						
2000	250	210						
2300		196						

